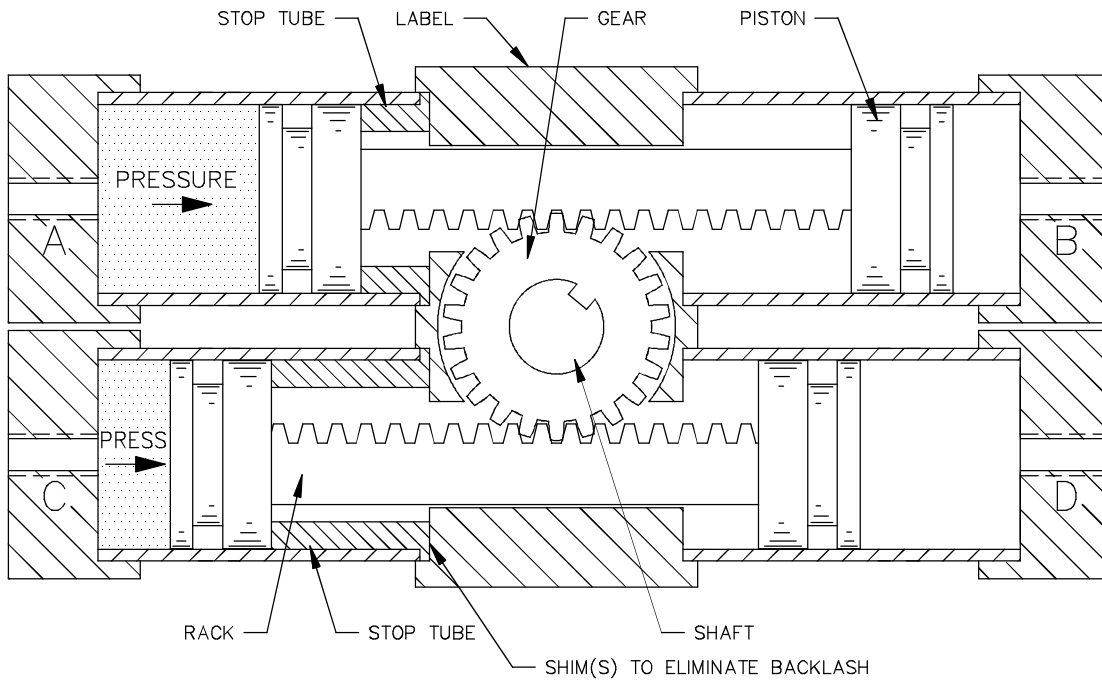
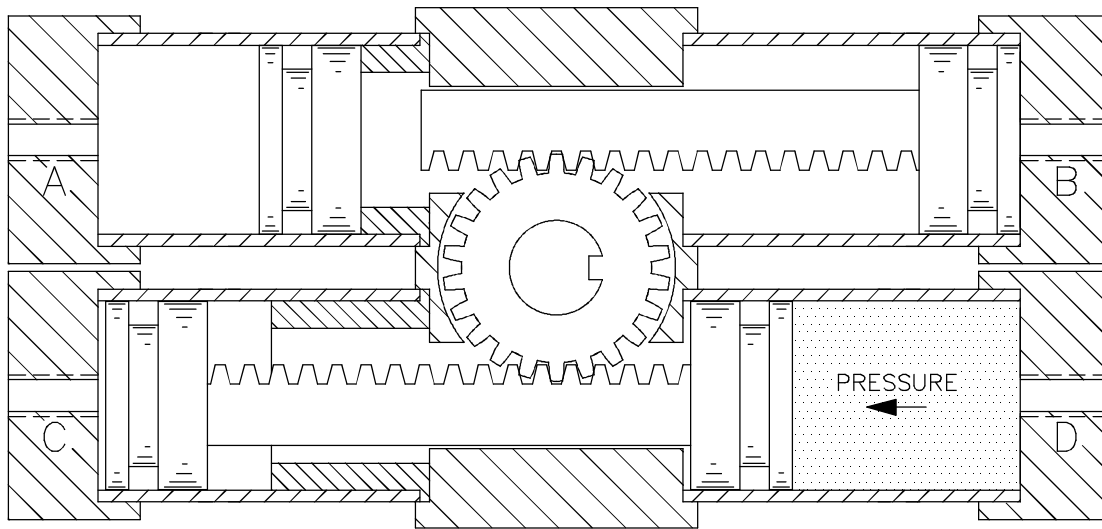


# DUAL RACK 3 POSITION ACTUATOR OPERATION

PLUMBING SCHEMATIC REFER TO SK-072



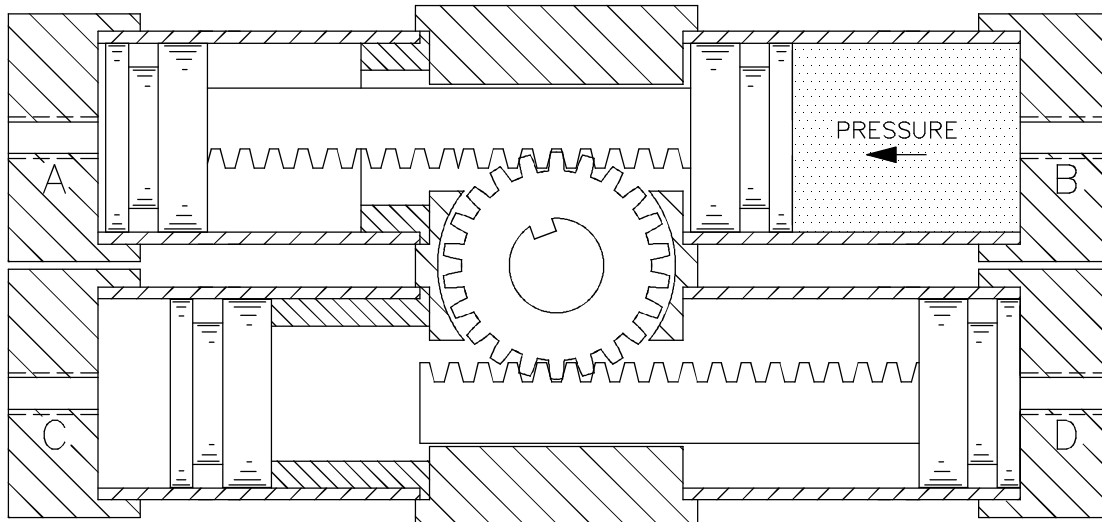
①  
CENTRAL POSITION



②  
FULLY CW POSITION

**NOTE:**

ONE PISTON LOSES CONTACT WITH THE RACK, WHEN SHAFT IS AT ENDS OF ROTATION. PISTONS BOTTOM ON ENDS 'B' & 'D' BUT NOT ON 'A' & 'C' TO TAKE UP BACKLASH.



③  
FULLY CCW POSITION