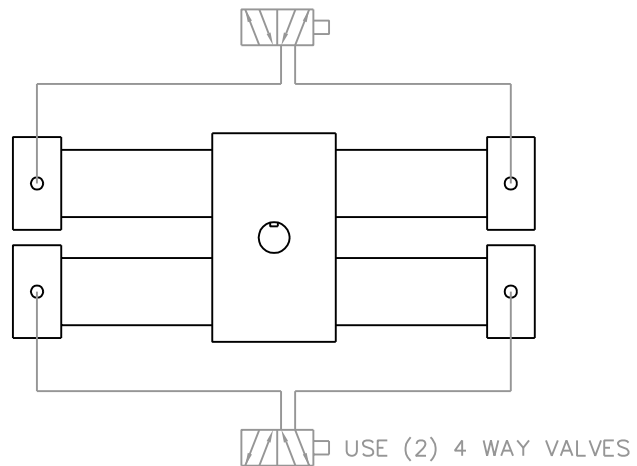


ALTERNATE PLUMBING, OPTION B



POSITION	PRESSURE				MAG SWITCHES			
	A	B	C	D	A	B	C	D
1	E	P	E	E	O	O	X	T
2(A)	P	P	P	P	T	O	T	O
2(B)	P	E	P	E	T	X	T	X
3	E	E	E	P	X	T	O	O

E=EXHAUST
P=PRESSURE
T=ON
O=OFF
X=UNKNOWN

OPTION (A) ABOVE PRODUCES SMOOTHER ACTION IN MOST CIRCUMSTANCES AND MAXIMIZES EFFECT OF CUSHIONS, BUT WILL RESULT IN SOME LASH (FREE PLAY) AT POSITION 2.
OPTION (B) SHOULD BE USED TO ELIMINATE LASH. ALTERNATE PLUMBING OPTION CAN BE USED TO REDUCE VALVE COUNT.

MAGNETIC SWITCH ADJUSTMENT:

1. CONNECT AIR LINES ACCORDING TO TABLE.
2. CONNECT SWITCHES ACCORDING TO TABLE ABOVE AND ELECTRICAL DIAGRAM ON SWITCH LABEL.
3. PRESSURIZE ACTUATOR TO DESIRED POSITION.
4. MOVE SWITCH FULLY IN OPPOSITE DIRECTION OF ARROW.
5. MOVE SWITCH SLOWLY IN DIRECTION OF ARROW UNTIL INDICATOR LIGHTS, THEN APPROXIMATELY .03" MORE. LOCK SWITCH IN PLACE & REPEAT FOR REMAINING SWITCHES.



11 SUNSHINE BLVD., ORMOND BEACH, FL. 32174

3 POSITION ROTARY ACTUATOR CONTROL

DWG. NO: SK-072

REV. BY	DATE	COMMENTS
B RLB	4/11/02	ADD OPTIONS A & B & MAG SWITCHES
A RLB	8/4/99	REVISED TRUTH TABLE