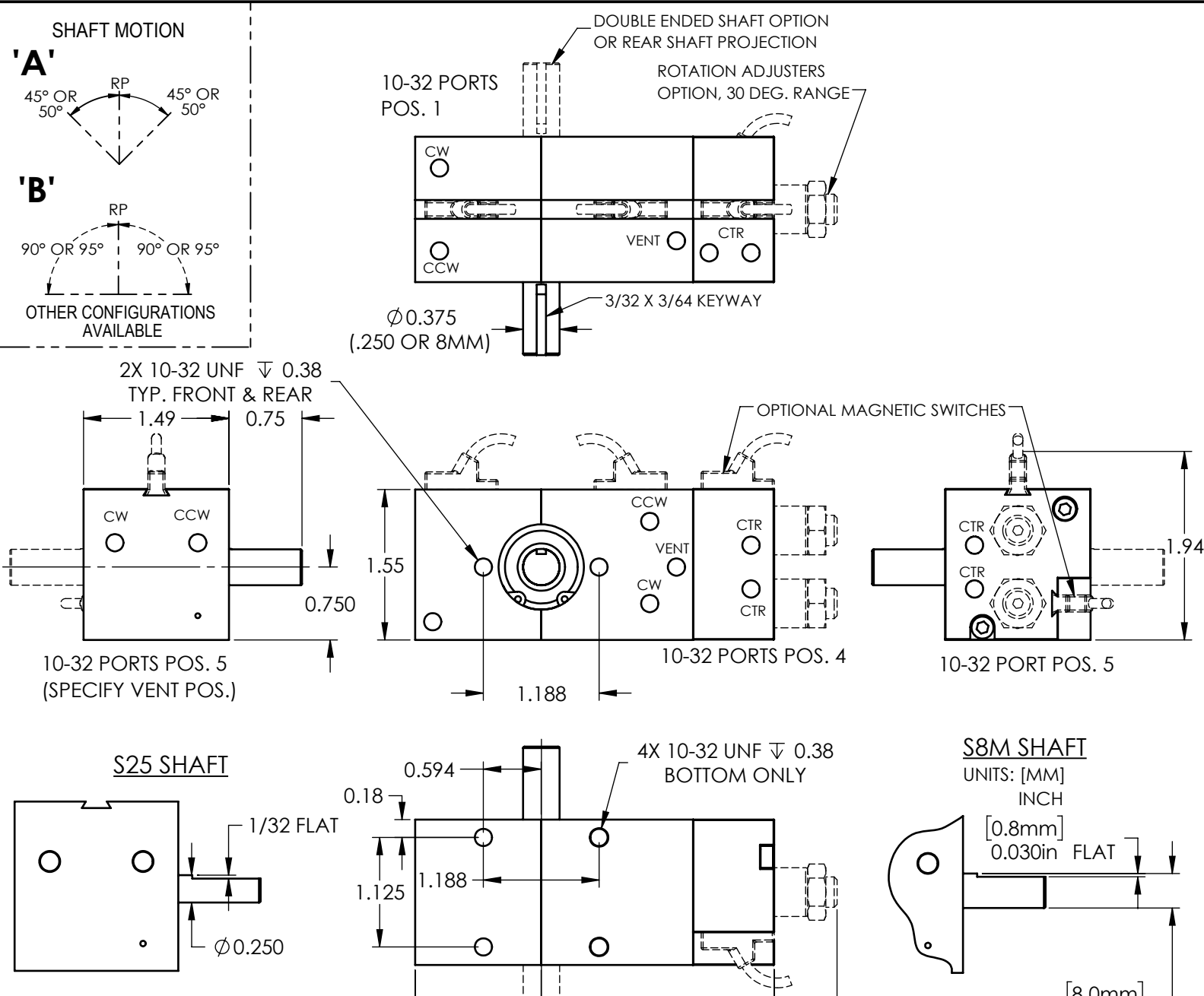
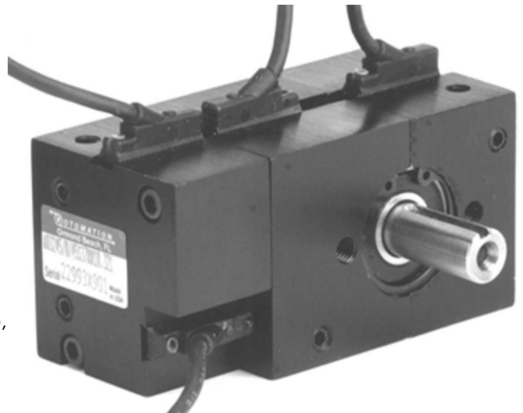


A032-3P COMPACT ACTUATOR



RATINGS	
Torque Factor to end position (in-lb/psi)	0.115
Torque Factor to center (in-lb/psi)	0.057
Bore Diameter (in)	5/8
Max. Working Pressure (psi)	150
Backlash end of stroke (degrees)	0.0
Max. Bearing Axial Load (lb)	76
Max. Bearing Radial Load (lb)	305
Shaft Bearing Spacing (in)	1.06
Displacement (in ³ /deg.)	0.0020
Weight: 180 deg. basic unit (lb)	0.5
Operating Temp. Range (°F):	Basic -20 to 130 'Q' OPTION 0 to 130

- NOTES:
- The position of the ports relative to the shaft can be changed by specifying rear projecting shaft as shown in the photo
 - 10-32 ports can be retapped to M5 x .8 threads upon request
 - For plumbing and magnetic switch system setup, request guide. Note that (4) magnetic switches are required to sense all (3) positions



12/06/22