

SEAL REPAIR KITS AND SEAL OPTIONS

PART NUMBERS FOR SEAL REPAIR KITS

SRK - A1 - F - C - A - V - T
 SERIES FLOW CUSHIONS ROTATION FKM PRETENSIONED
 CONTROL ADJUSTERS TYPE SEALS

EXAMPLES:

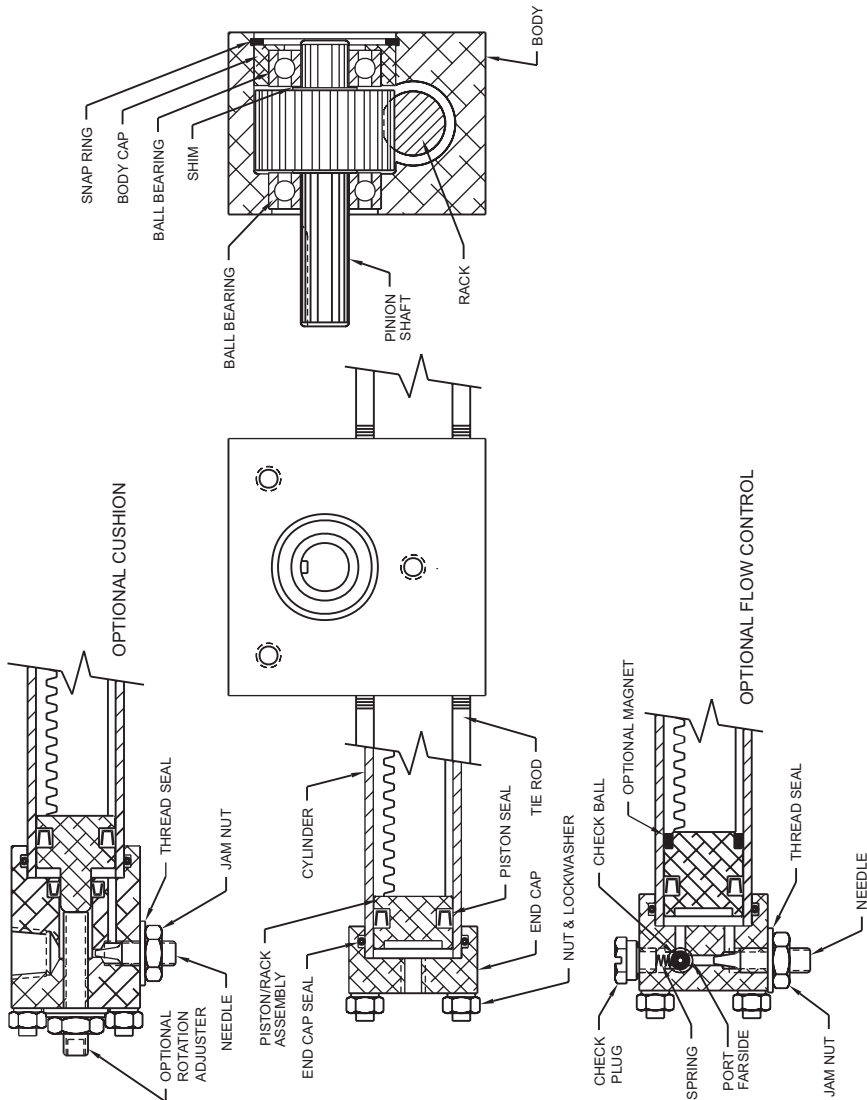
SEAL KIT FOR A1-90-TC-S37-3C2-1A-3RL-10.32-1 = SRK-A1-CA

SEAL KIT FOR A1-180-TC-D37-2F1-10.32-2 = SRK-A1-F

SEAL KIT FOR SPECIAL, SUCH AS A1-B004 = SRK-A1-B004

IF PART NUMBER IS NOT KNOWN, PROVIDE UNIT SERIAL NUMBER FROM LABEL OR STAMPED INTO BODY UNDER LABEL.

A1 ACTUATOR PARTS LOCATION

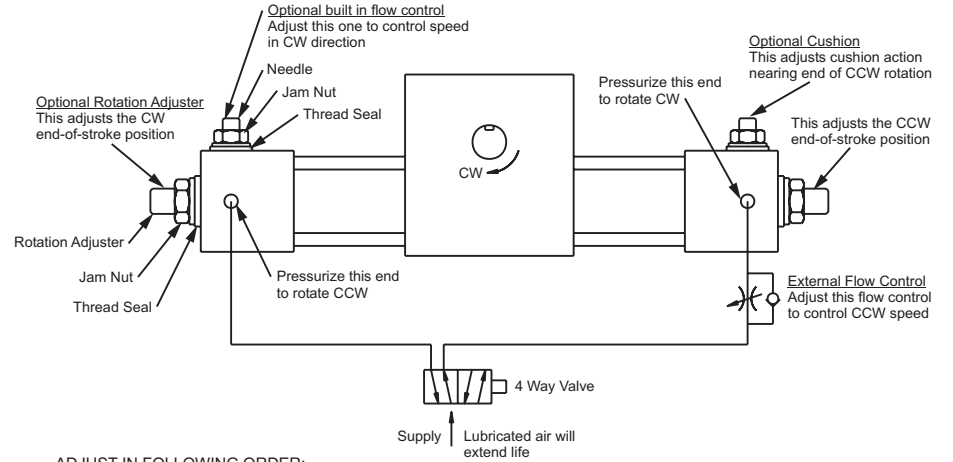


NOTE:
 ORDER PARTS BY PART NAME AND COMPLETE
 PART NUMBER OR SERIAL NUMBER.



11 Sunshine Blvd. Ormond Beach, Fl. 32174 Phone: 386/676-6377 Fax: 386/676-6379
 Email: sales@rotomation.com Website: www.rotomation.com

A1 ROTARY ACTUATOR INSTALLATION AND SETUP

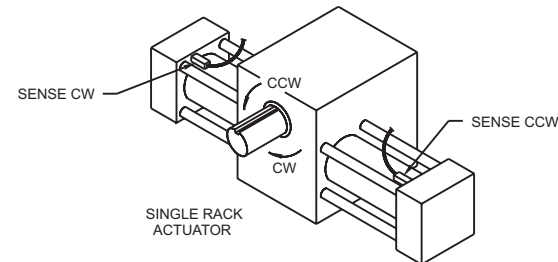


ADJUST IN FOLLOWING ORDER:

Skip options which your actuator does not have.

- 1) To adjust rotation "A" option.
 1. Apply pressure to rotate desired direction.
 2. Loosen jam nut using the correct size wrench.
 3. Adjust position using hex key wrench in rotation adjuster.
 4. Tighten jam nut while holding rotation adjuster steady.
- 2) Adjust magnetic switch, "R" or "S" option.
 1. DISABLE AUTOMATIC CONTROL. KEEP CLEAR OF SHAFT AND SHAFT MOUNTED PARTS!
 2. Apply voltage to switch only, place switch at end cap, cable toward body.
- 2a) For signal at end of rotation.
 1. Drive unit to end of rotation.
 2. Move switch toward body until LED glows, clamp.
 3. Set flow controls for low speed.
 4. Cycle to check operating point, adjust as required.
- 2b) For signal before end of rotation.
 1. Position shaft to switching point.
 2. Move switch toward body until LED glows, clamp.
 3. Set flow controls for low speed.
 4. Cycle to check operating point, adjust as required.

ACTUATOR SWITCH PLACEMENT



- 3) To adjust speed "F" option.
 Flow controls may be built in ("F" option) or external (not supplied by Rotomation, Inc.)
 To adjust built in controls:
 1. Loosen jam nut.
 2. Tighten needle to reduce speed, loosen to increase speed. Make small adjustments.
 3. Tighten jam nut while holding needle steady.
- 4) Adjust Cushion "C" option.
 1. Loosen jam nut.
 2. Tighten needle to increase stiffness of cushion, loosen to decrease. If cushion causes bounce, loosen needle.
 3. Tighten jam nut while holding needle steady.

SWITCH LEADS

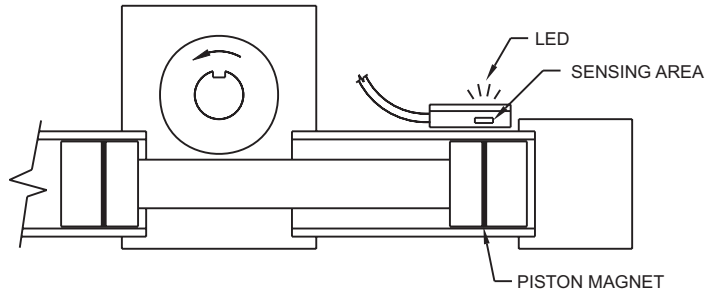
	OPTION	LEAD
Standard Lead	RL, SL	9", end stripped
Connection option	RC, SC	6" pigtail with male connector

EXTENSION CABLES (PURCHASE SEPARATELY)

PART NUMBER	DESCRIPTION
CC2	2 m cable, female connector one end, stripped other end.
CC5	5 m cable, female connector one end, stripped other end.

- KEEP MAGNETIC MATERIAL AWAY -

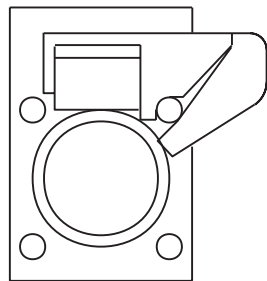
SENSING



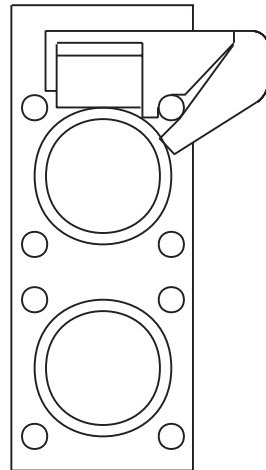
APPROACHING PISTON MAGNET ACTIVATES SENSOR, OPERATES SWITCH AND LED.
PLACE SWITCH AS CLOSE AS POSSIBLE TO END CAP FOR CORRECT OPERATING POSITION.

SWITCH MOUNTING

TIE ROD CLAMP



SERIES A1



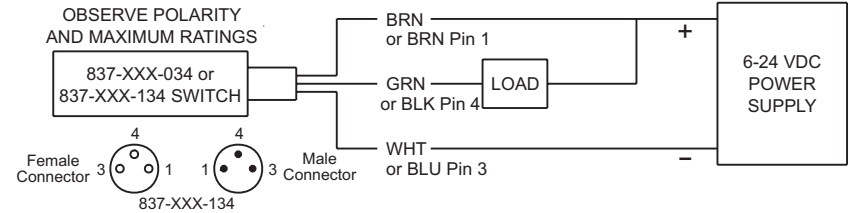
SERIES A12

ROTATION SINKING (NPN) SWITCH - OPTION R

DESCRIPTION AND RATING

NO, sinking (NPN), LED
Switching voltage
Switching current
Switching power
Voltage drop
Temperature range
Environment

6 to 24 VDC
.5 a, max.
12 w, max.
.5 V
-30 to +80C
Resistant to moisture, dust, oil

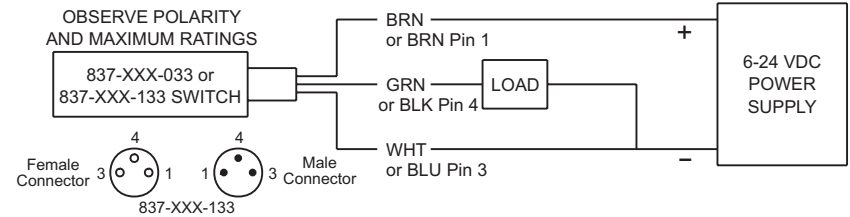


ROTATION SOURCING (PNP) SWITCH - OPTION S

DESCRIPTION AND RATING

NO, sourcing (PNP), LED
Switching voltage
Switching current
Switching power
Voltage drop
Temperature range
Environment

6 to 24 VDC
.5 a, max.
12 w, max.
.5 V
-30 to +80C
Resistant to moisture, dust, oil



ROTOMATION TESTS ALL SWITCHES FOR PROPER FUNCTION BEFORE SHIPMENT AND CANNOT REPLACE THEREAFTER.
SWITCHES OF OTHER MANUFACTURE HAVE NO GUARANTEE OF COMPATIBLE PERFORMANCE BY ROTOMATION, INC.