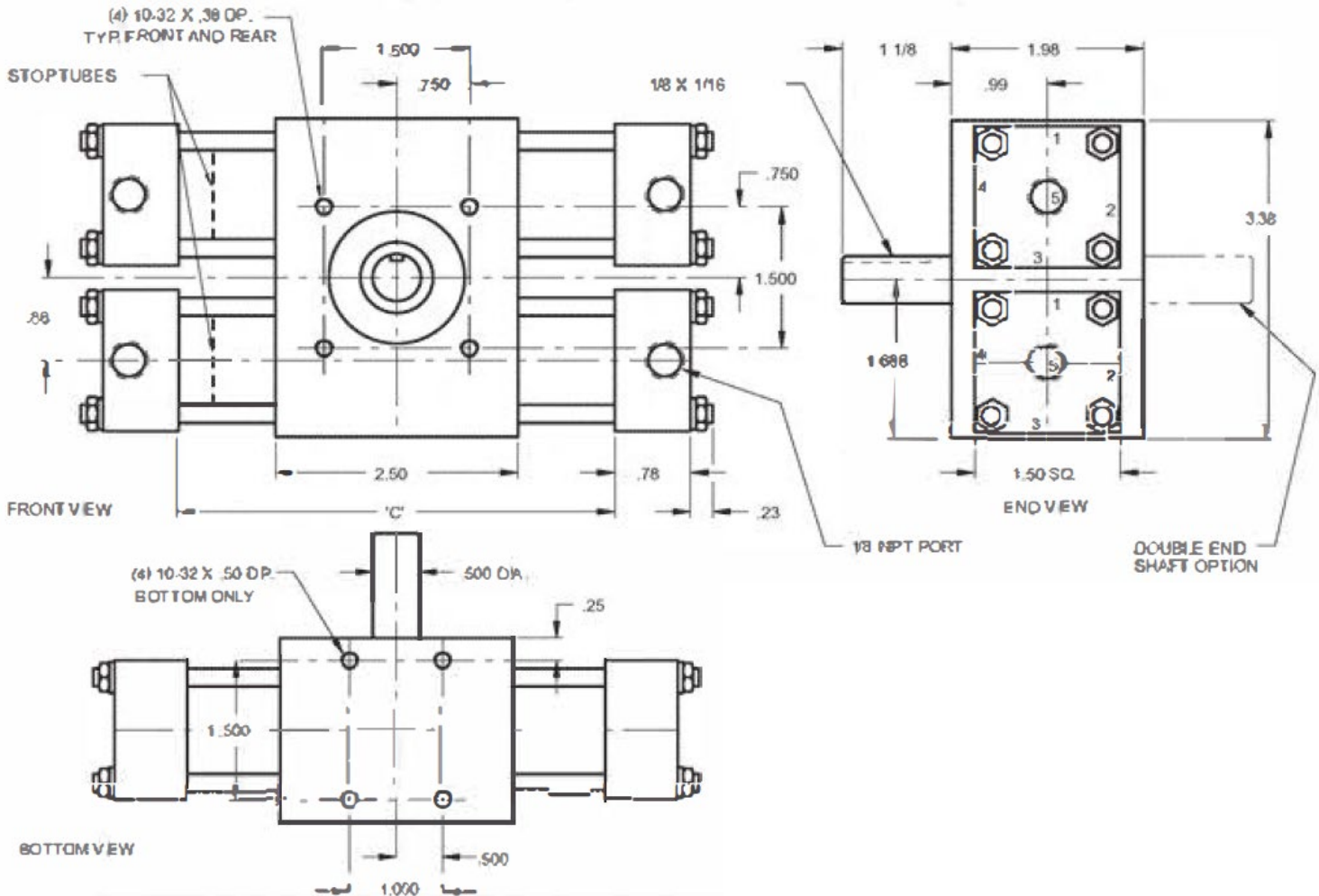


A22-3P ROTARY ACTUATOR



3-POSITION ACTUATOR

- Mounting and layout dimensions are like standard dual rack unit of same rotation.
- (i.e. 90-0-90 degree unit dimensionally like 180-degree standard unit)
- Stop tubes are installed in left cylinders. Magnetic switches to sense central position should also be installed on the left cylinders.
- Generally, torque is equal to the single rack unit of same size; other ratings as for dual rack unit.
- For plumbing diagram see User Guide.

4 OR 5-POSITION ACTUATOR

Add position stops to a 3-position unit detailed here. See User Guide or consult factory.

ROTATION	"C" DIMENSION		ADD TO "C" DIMENSION		
	STD.	"C", "R" OR "RS" OPT.	"Q" OPT.	"Q" & "A" OPT.	"HP" OPT.
30 DEG.	3.38	6.12	0.08	0.22	0.50
45	3.68	6.29			
60	4.01	6.45			
90	4.66	6.45			
100	4.88	6.45			
120	5.32	6.45			
180	6.63	7.63			
190	6.85	7.85			
270	8.58	9.58			
360	10.56	11.56			
370	10.77	11.77			
540	14.48	15.48			
550	14.70	15.70			
720	18.41	19.41			
730	18.63	19.63	0.06	0.22	0.50

RATINGS	
Torque factor, in lb/p.s.i.	0.49
Max. Working Pressure, p.s.i. Air	250
	Oil 750
Max. thrust, Non-shock, lb.	100
Max. Radial load, Non-shock, lb.	85
Displacement, cc/deg.	0.02
Weight 180° std. Unit, lb. oz.	3-10



NOTES

1. For oil pressures exceeding approximately 250 psi recommend option HP which adds 1" to c-d dimension.
2. Switch bracket mounts to tie rod: place as required for access and signal phasing.