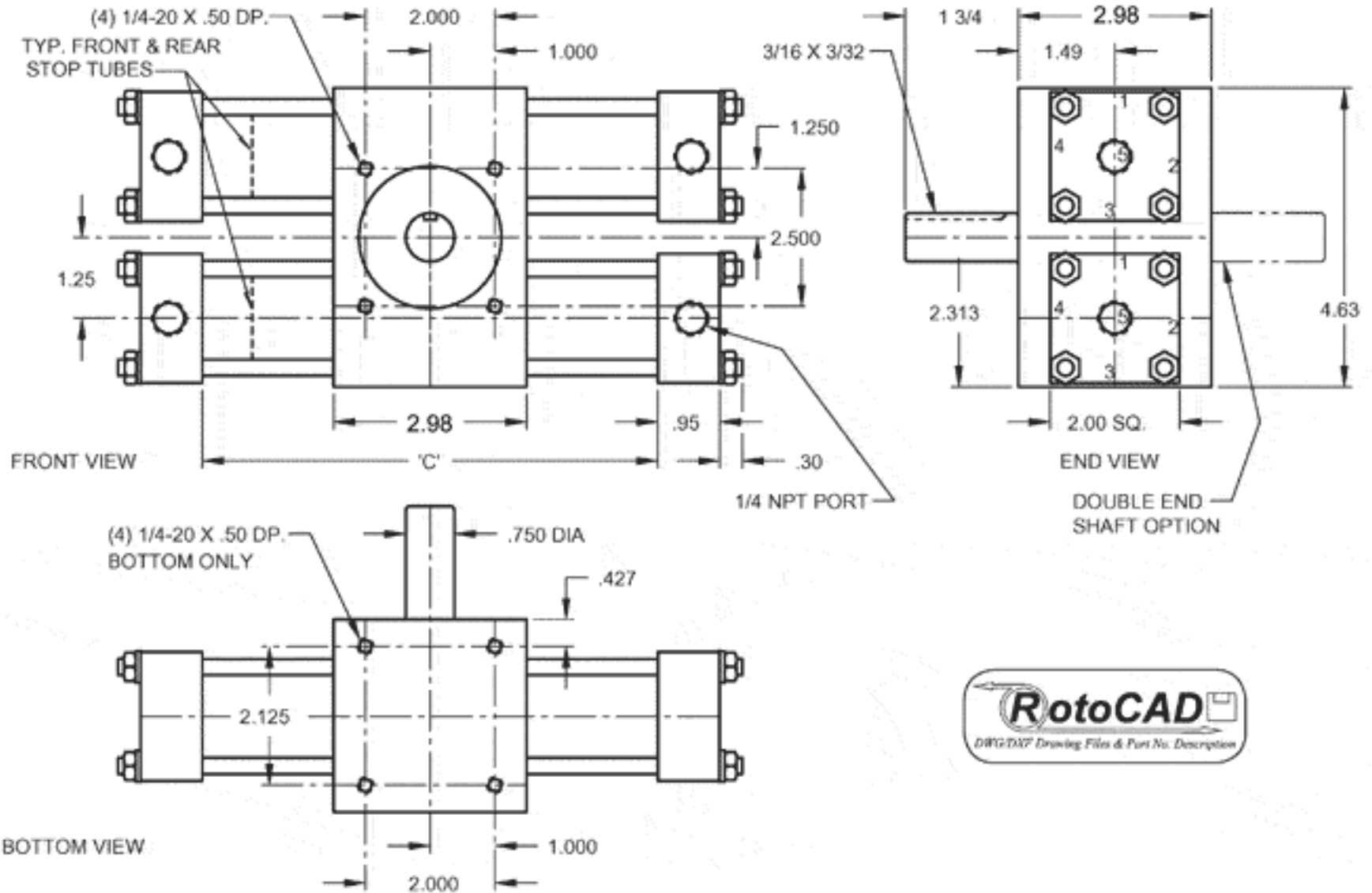
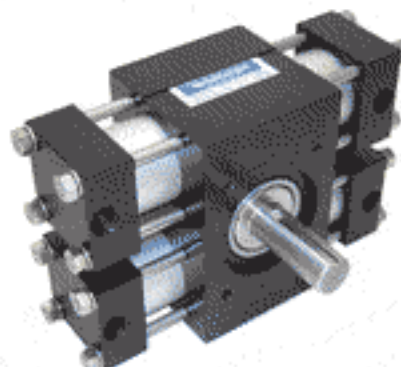


# A32 3-POSITION ROTARY ACTUATOR



ROTATION	"C" DIMENSION		ADD TO "C" DIMENSION		
	STD.	"G", "R" OR "RS" OPT.	"Q" OPT.	"Q" & "A" OPT.	"HP" OPT.
30 DEG.	4.50	6.70	0.06	0.29	0.50
45	5.02	6.97			
60	5.55	7.23			
90	6.59	7.59			
100	6.94	7.94			
120	7.64	8.64			
180	9.74	10.74			
190	10.09	11.09			
270	12.88	13.88			
360	16.02	17.02			
370	16.37	17.37			
540	22.30	23.30			
550	22.65	23.65			
720	28.59	29.59			
730	28.93	29.93	0.06	0.29	0.50

RATINGS	
Torque factor, in lb./p.s.i.	1.49
Max. Working Pressure, p.s.i.	Air 250 Oil 750
Max. thrust: Non-shock, lb.	300
Max. Radial load: Non-shock, lb.	300
Displacement: in <sup>3</sup> /deg.	0.05
Weight 180° std. Unit: lb.-oz.	8-12



## THREE POSITION ACTUATOR

- Mounting and layout dimensions are like standard dual rack unit of same rotation.  
(i.e. 90-0-90 degree unit dimensionally like 180-degree standard unit)
- Stop tubes are installed in left cylinders. Magnetic switches to sense central position should also be installed on the left cylinders.
- Generally, torque is equal to the single rack unit of same size; other ratings as for dual rack unit.
- For plumbing diagram click on user guide.

**FOUR OR FIVE POSITION ACTUATOR**  
Add position stops to a three position unit detailed here. See User Guide or consult factory.

### NOTES:

1. For oil pressures exceeding approximately 250 psi recommend option HP which adds 1" to 'C' dimension.
2. Switch bracket mounts to tie rod; place as required for access and signal phasing.