

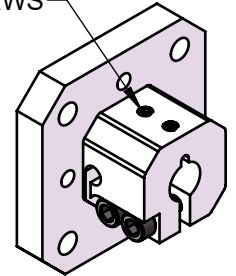
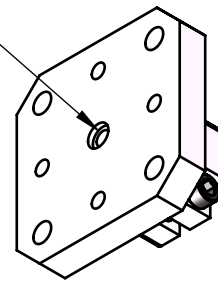
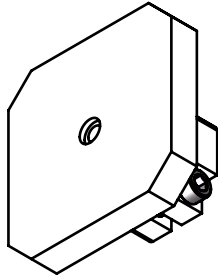
SHAFT MOUNTING ADAPTERS

"N" = NO HOLES

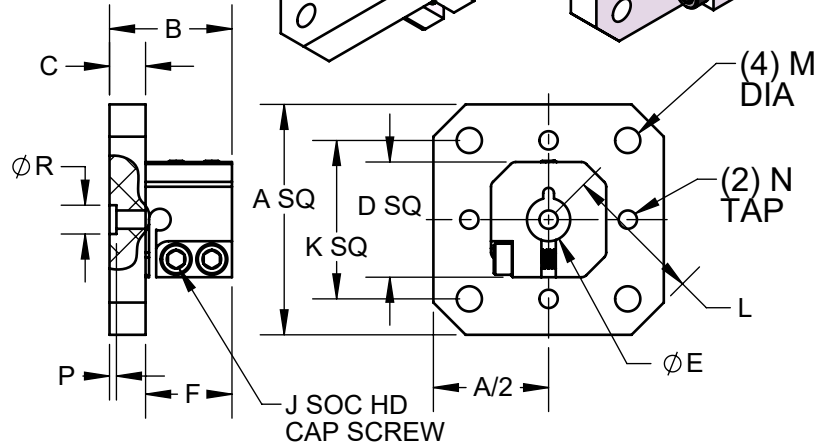
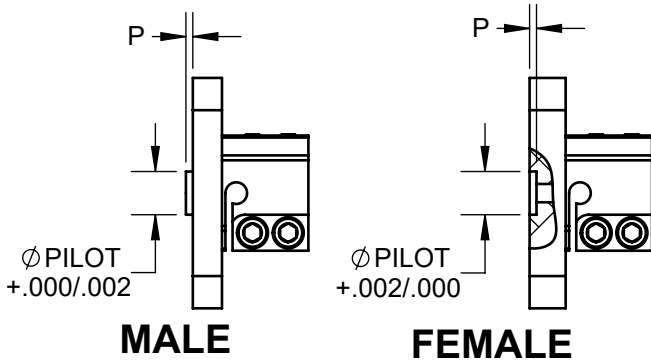
"R" REFERENCE BORE CONCENTRIC TO SHAFT BORE

"W" = WITH HOLES

"H" SET SCREWS



PILOT OPTIONS



DIMENSIONS

	SHAFT DIA	A	B	C	D	E	F	G	H	J	K	L	M	N	P	R
37	.375	2.00	1.063	.313	1.00	.375	.750	3/32 x .75 LG	#6-32	#8-32	1.375	1.22	.219	#10-32	.060	.250
50	.500	2.50	1.188	.375	1.25	.500	.813	1/8 x .81 LG	#6-32	#10-32	1.750	1.64	.219	#10-32	.060	.250
75	.750	3.50	1.875	.500	1.63	.750	1.375	3/16 x .38 LG	#10-32	1/4-20	2.500	2.25	.281	1/4-20	.060	.313
10	1.000	4.00	2.125	.625	2.25	1.000	1.500	1/4 x 1.50 LG	1/4-20	5/16-18	3.000	2.56	.406	3/8-16	.125	.438
11	1.125	4.00	2.125	.625	2.25	1.125	1.500	1/4 x 1.50 LG	1/4-20	5/16-18	3.000	2.56	.406	3/8-16	.125	.438

ORDERING INFORMATION

SMA - 50 - W - M.625

SIZE

SHAFT DIA	SYMBOL
.375	37
.500	50
.750	75
1.000	10
1.125	11

HOLES

HOLES	SYMBOL
AS SHOWN	W
CENTER HOLE ONLY	N
USER SPECIFIED HOLES	S.XXX FOR SPECIAL DRILL PATTERN

PILOT

PILOT	SYMBOL
REFERENCE BORE ONLY	LEAVE BLANK
MALE PILOT	MX.XXX X.XXX = PILOT DIAMETER (INCHES)
FEMALE PILOT	FX.XXX X.XXX = PILOT DIAMETER (INCHES)

NOTES:

- Material: Clear Anodized Aluminum.
- User specified holes. Send drawing. Factory will assign number XXX.
- Adapters are stocked with no holes and with holes as shown. Special Hole Patterns and Pilots are normally added after anodize and will expose bare aluminum
- Keyway is aligned with side of plate. Reference bore "R" is concentric with the shaft bore within .001 TIR
- Shaft Mounting Adapters shipped with key, clamp screws & set screws