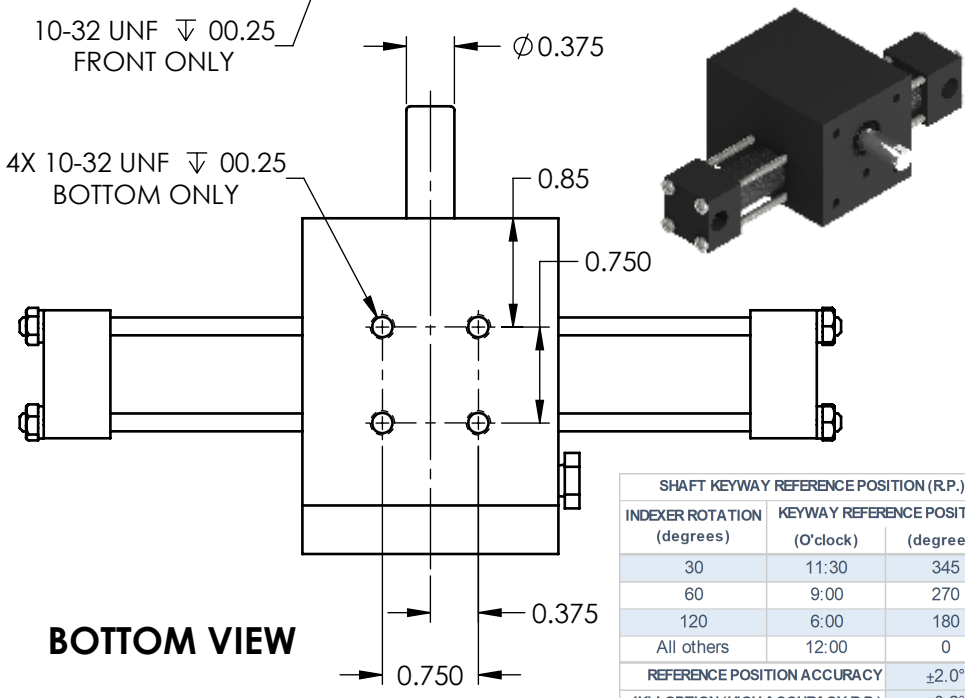
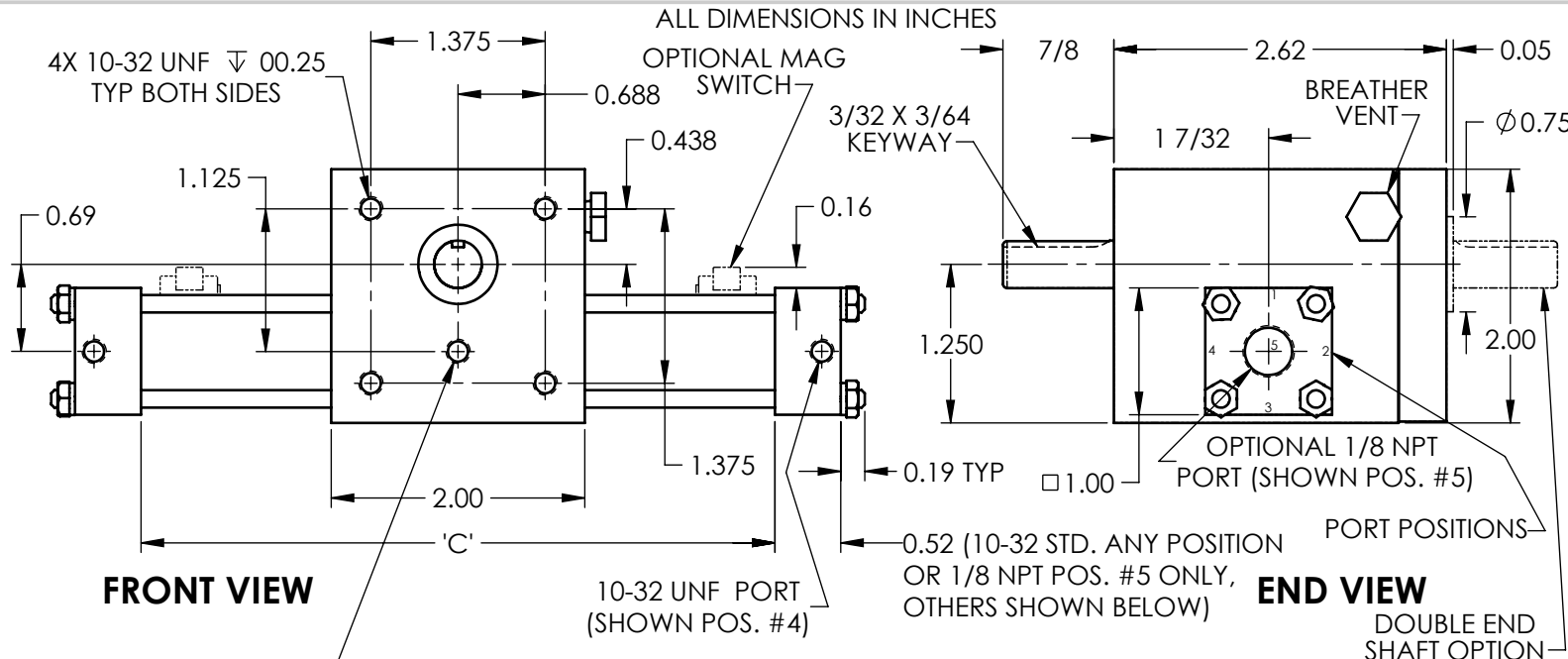


X1 INDEXING ACTUATOR



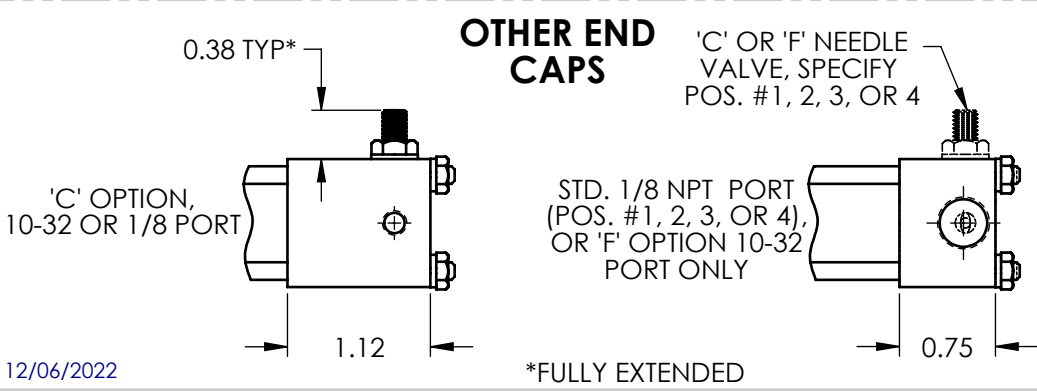
SHAFT KEYWAY REFERENCE POSITION (R.P.)		
INDEXER ROTATION (degrees)	KEYWAY REFERENCE POSITION (O'clock)	(degrees)
30	11:30	345
60	9:00	270
120	6:00	180
All others	12:00	0
REFERENCE POSITION ACCURACY		$\pm 2.0^\circ$
'KL' OPTION (HIGH ACCURACY R.P.)		$\pm 0.2^\circ$

Note: 'KL' option not available on 15, 18, and 22.5 degrees units.

'C' DIMENSION		
ROTATION ± 0.2 (degrees)	STANDARD (inches)	'R' OR 'S' OPTION (inches)
12	2.06	4.79
15	2.06	4.81
18	2.06	4.84
22.5	2.06	4.88
30	2.06	4.95
36	2.06	5.00
45	2.06	5.08
60	2.28	5.21
72	2.49	5.21
90	2.81	5.21
120	3.33	5.21
180	4.38	5.21
360	7.52	8.02

OPTIONS: ADD TO 'C' DIM. PER SIDE		
'Q' OPTION	'Q' & 'A' OPTION	'HP', 'A', OR 'K' OPTION
0.06	N/A	N/A

RATINGS	
Torque Factor (in-lb/psi)	0.153
Bore Diameter (in)	5/8
Max. Working Pressure (psi)	250
Backlash @ End of Stroke (degrees)	0
Max. Bearing Axial Load (lb)	76
Max. Bearing Radial Load (lb)	305
Shaft Bearing Spacing (in)	1.67
Max. Reverse Torque (in lb)	23
Max. Kinetic Energy (in lb)	2.1
Displacement (in ³ /deg.)	0.0026
Weight: 180 deg. basic unit (lb)	1.7
Operating Temp. Range (°F):	Basic
	'R', 'S', or 'Q' OPTION
	0 to 180
	0 to 160

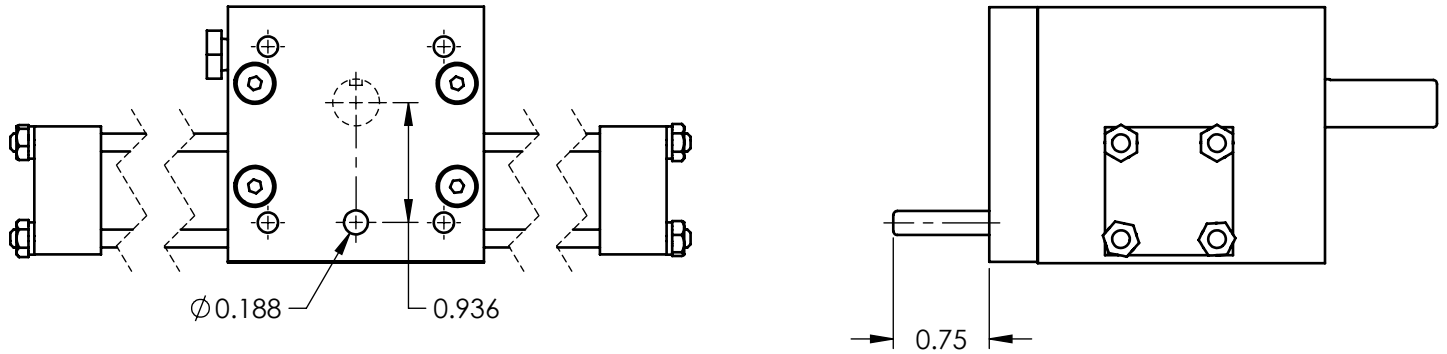


12/06/2022

X1 ACTUATOR OPTIONS

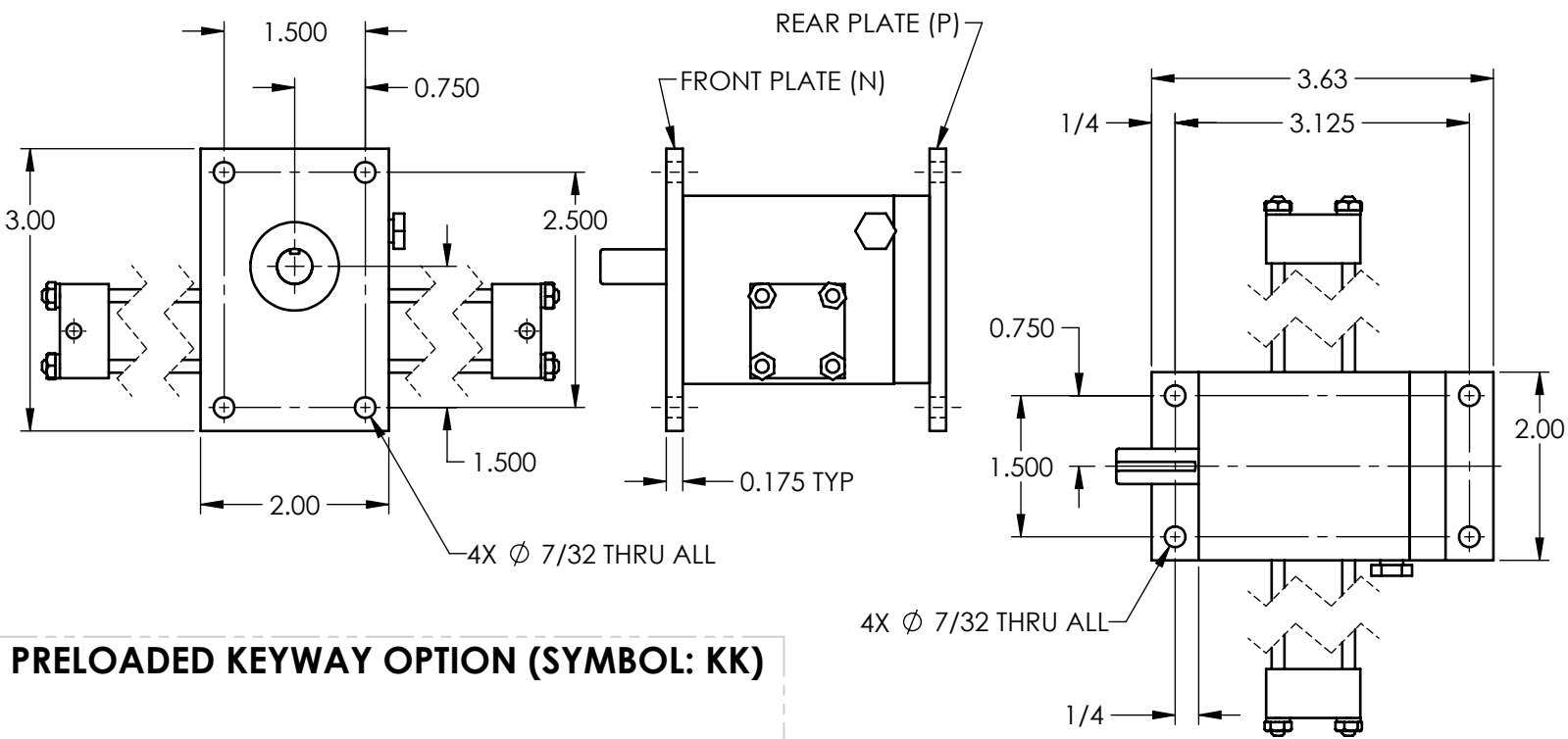


EXTENDED PAWL SHAFT (SYMBOL: E)



PAWL SHAFT MOVES 7° AT INDEX AND RESET (CAM DRIVEN AT RESET AND SPRING DRIVEN AT INDEX. USE NON-CONTACT SENSOR ONLY).

MOUNTING PLATE OPTIONS (SYMBOL: M, N, OR P)



PRELOADED KEYWAY OPTION (SYMBOL: KK)

