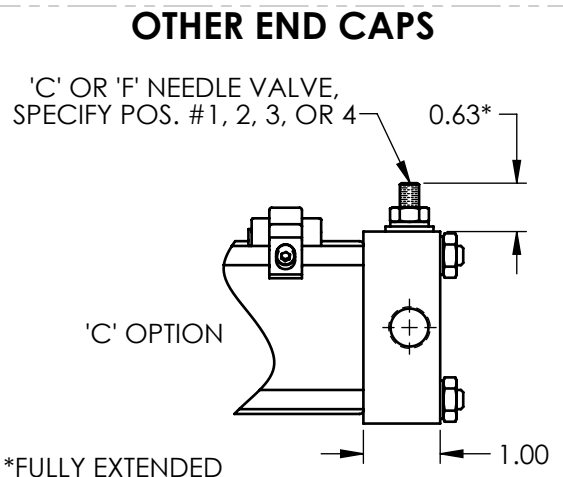
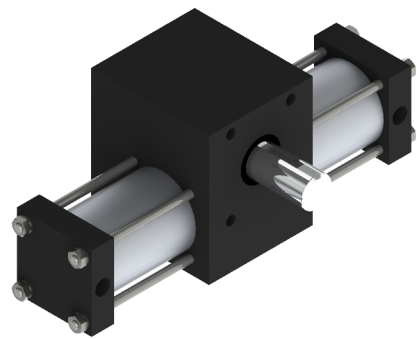
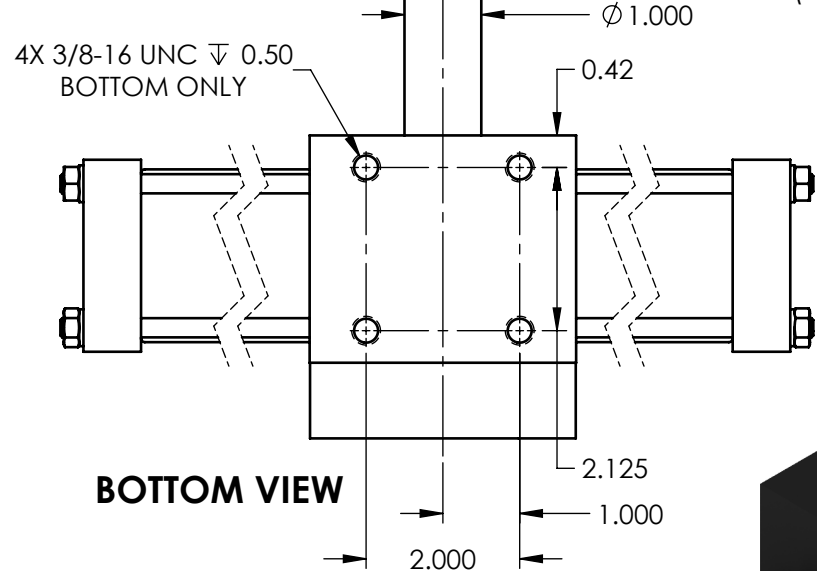
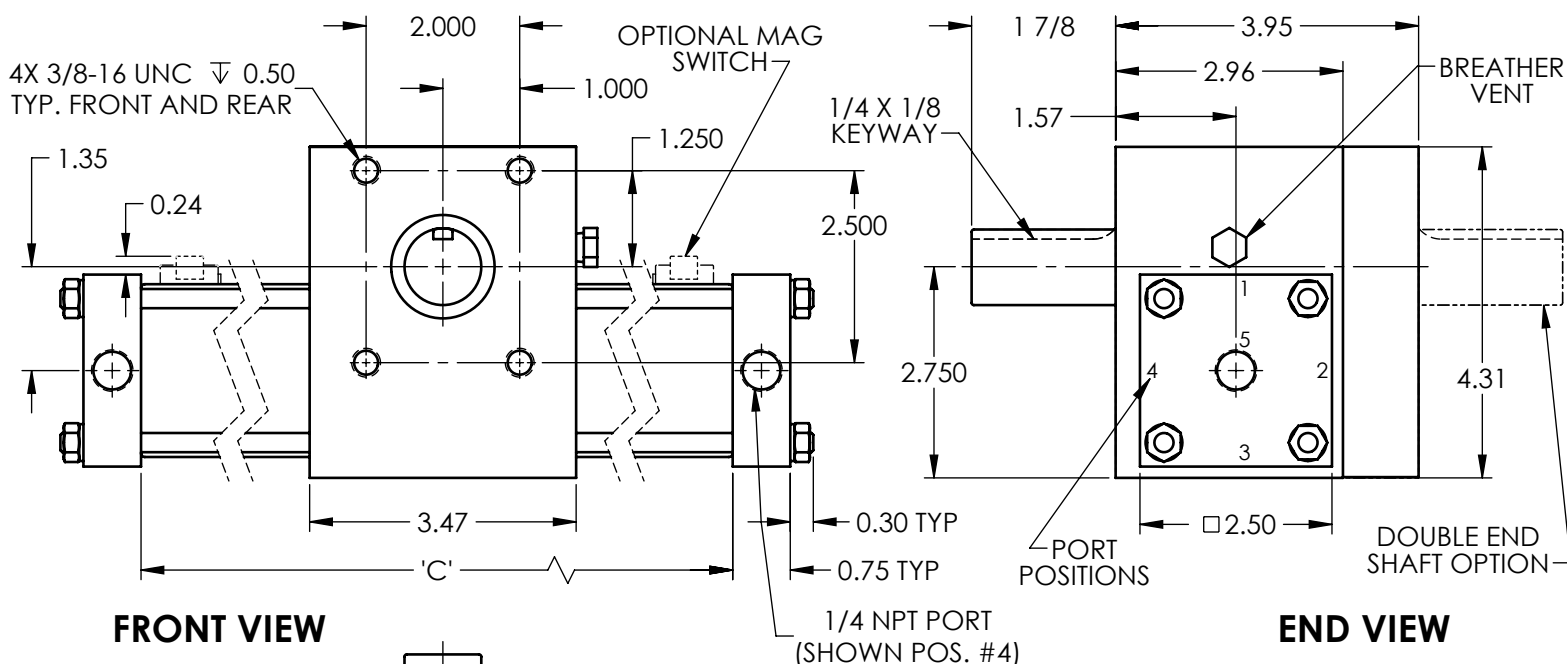


X4 INDEXING ACTUATOR

ALL DIMENSIONS IN INCHES



SHAFT KEYWAY REFERENCE POSITION (R.P.)		
INDEXER ROTATION (degrees)	KEYWAY REFERENCE POSITION (O'clock)	KEYWAY REFERENCE POSITION (degrees)
30	11:30	345
60	9:00	270
120	6:00	180
All others	12:00	0
REFERENCE POSITION ACCURACY		±2.0°
'KL' OPTION (HIGH ACCURACY R.P.)		±0.2°

Note: 'KL' option not available on 15, 18, and 22.5 degrees units.

'C' DIMENSION		
ROTATION +/-0.2 (degrees)	STANDARD (inches)	'G', 'R' OR 'S' OPTION (inches)
12	6.2	6.94
15	6.31	7
18	6.43	7.06
22.5	6.6	7.14
30	6.89	7.29
36	7.12	7.4
45	7.46	7.58
60	8.04	8.04
72	8.5	8.5
90	9.19	9.19
120	10.34	10.34
180	12.65	12.65
360	19.56	19.56

OPTIONS: ADD TO 'C' DIM. PER SIDE		
'Q' OPTION (RESET ONLY)	'Q' & 'A' OPTION	'A' OR 'K' OPTION
0.06	N/A	1.00

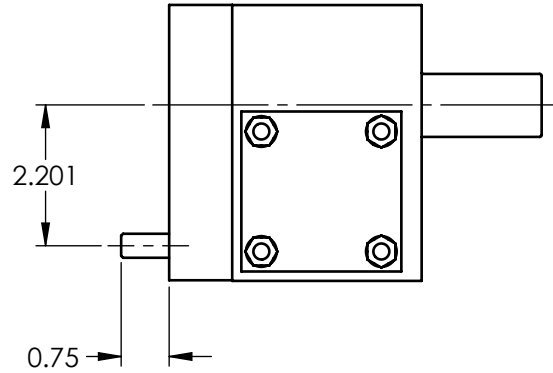
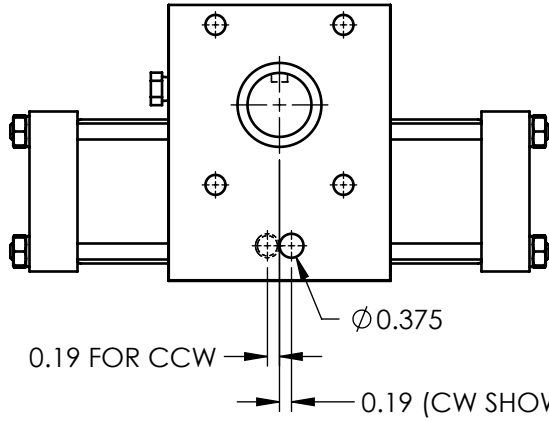
RATINGS					
Torque Factor (in-lb/psi)	3.46				
Bore Diameter (in)	2				
Max. Working Pressure (psi)	120				
Rotational Accuracy (degrees) (non-accumulating)	+/- 0.2				
Backlash @ End of Stroke (degrees)	0				
Max. Bearing Axial Load (lb)	290				
Max. Bearing Radial Load (lb)	1160				
Shaft Bearing Spacing (in)	2.56				
Max. Reverse Torque (in lb)	206				
Max. Kinetic Energy (in lb)	17.4				
Displacement (in ³ /deg.)	0.061				
Weight: 180 deg. basic unit (lb)	10.8				
Operating Temp. Range (°F):	<table border="0"> <tr> <td>Basic</td> <td>0 to 180</td> </tr> <tr> <td>'G', 'R', 'S', or 'Q' OPTION</td> <td>0 to 160</td> </tr> </table>	Basic	0 to 180	'G', 'R', 'S', or 'Q' OPTION	0 to 160
Basic	0 to 180				
'G', 'R', 'S', or 'Q' OPTION	0 to 160				

*FULLY EXTENDED

X4 ACTUATOR OPTIONS

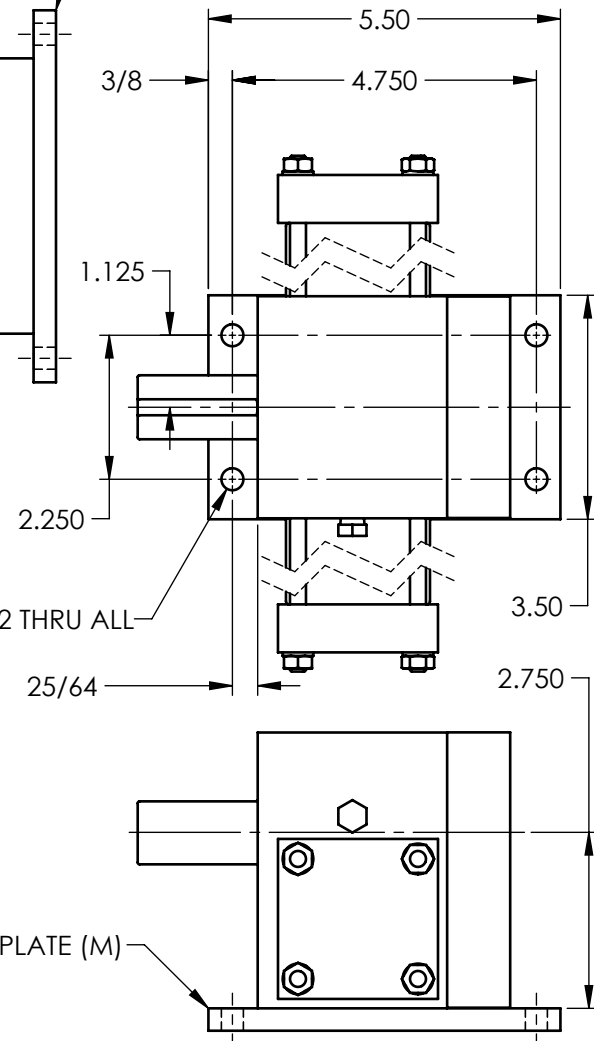
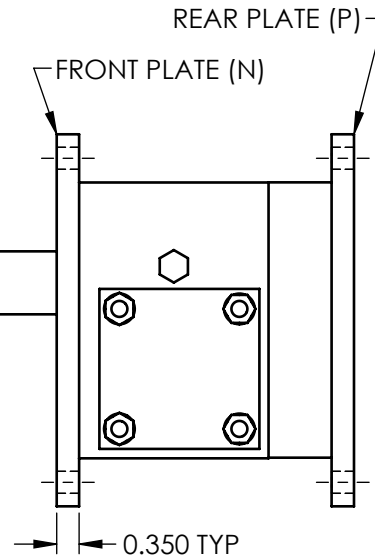
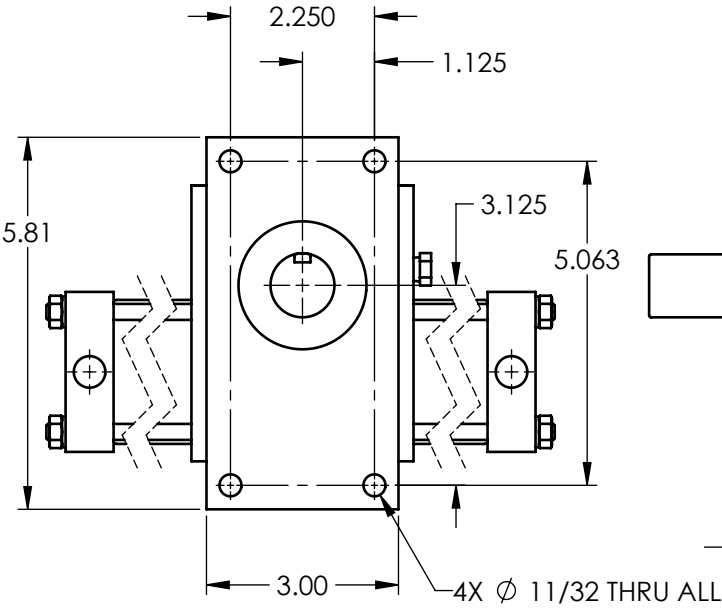


EXTENDED PAWL SHAFT (SYMBOL: E)

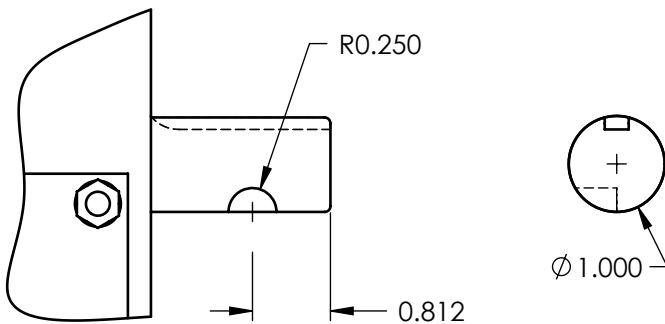


PAWL SHAFT MOVES 7° BETWEEN INDEX AND RESET
 (CAM DRIVEN AT RESET AND SPRING DRIVEN AT INDEX. USE NON-CONTACT SENSOR ONLY).

MOUNTING PLATE OPTIONS (SYMBOL: M, N, OR P)



PRELOADED KEYWAY ('KK') OPTION



BOTTOM PLATE (M)