

EXTENDED PAWL SHAFT – AN ALTERNATIVE TO MAGNETIC SENSORS - FOR INDEXING ACTUATORS



MAXIMUM LOAD TORQUE ON EXTENDED PAWL SHAFT

Unit	In. Oz.
X1 or X12	1
X2 or X22	2
X3 or X32	10
X4 or X42	17

INDEXING ACTUATOR EXTENDED PAWL SHAFT

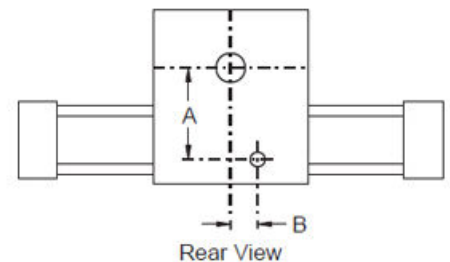
Shaft rotates 7 deg. at index and reset. Arm actuates switch, prox detector or pilot valve. Dimensions: see below.

Mechanical signal of index and reset. Sense with switch, pilot valve or proximity detector.

Pawl and shaft move 7° at index and reset; cam driven at reset, spring driven at index. Use 1" arm, proximity detector or sensitive switch.

Shaft projects 3/4" from back of body. See page 41.

Symbol: E
X3-120-CCW-S75-1F12C1-2E shown.



UNIT	SHAFT DIA.	DIM. A	DIM. B	PAWL SHAFT ROTATION	
				DRIVE	RESET
X1 CW	.188	.936	0	CW	CCW
X1 CCW	.188	.936	0	CCW	CW
X2 CW	.250	1.309	+ .107	CW	CCW
X2 CCW	.250	1.309	- .107	CCW	CW
X3 CW	.375	1.875	0	CW	CCW
X3 CCW	.375	1.875	0	CCW	CW
X4 CW	.375	2.201	+ .188	CW	CCW
X4 CCW	.375	2.201	- .188	CCW	CW

+ to right of centerline
- to left of centerline