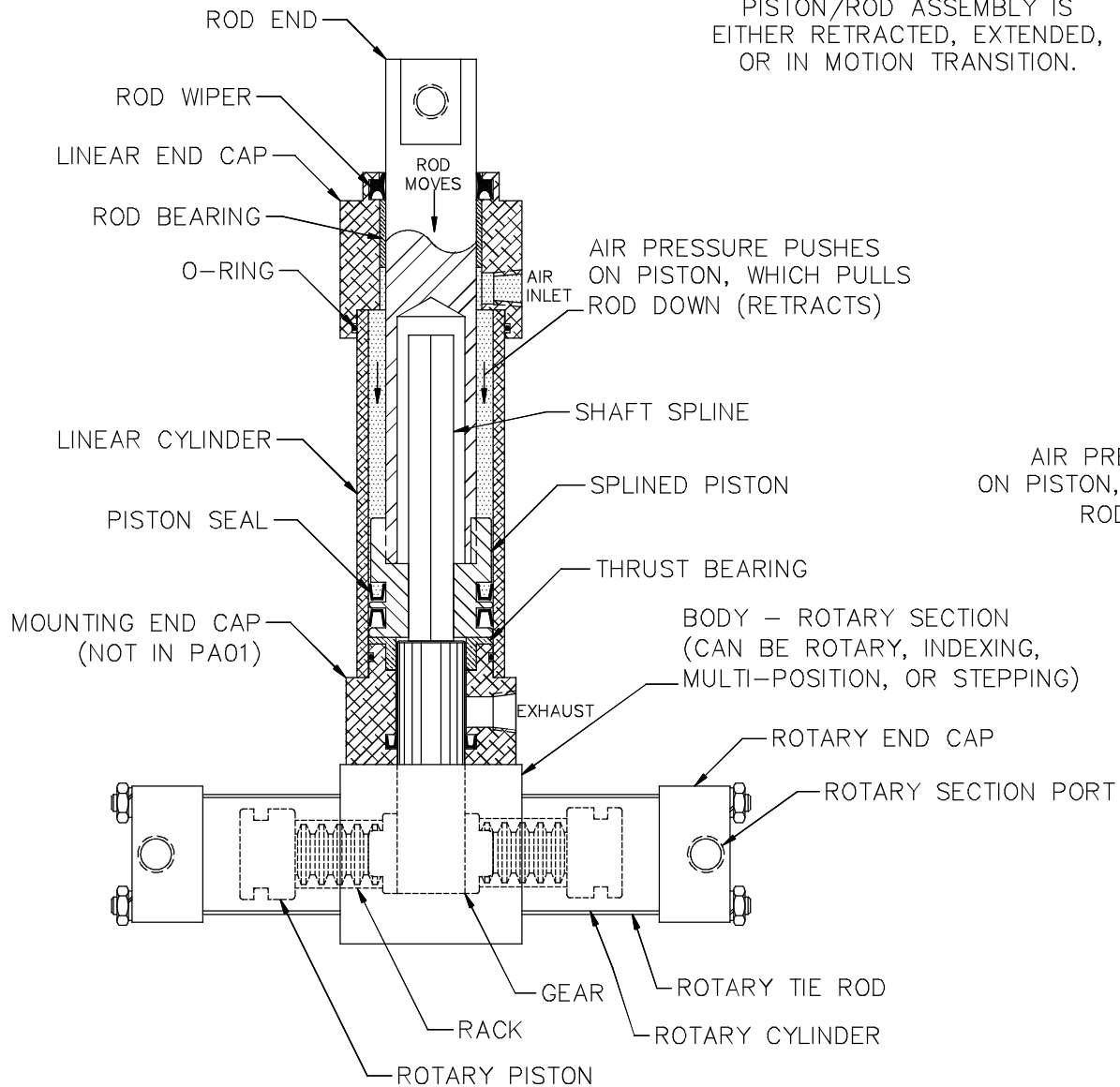


MULTI-MOTION ACTUATOR OPERATION

ROTARY AND LINEAR SECTIONS
ARE INDEPENDENTLY CONTROLLED

TORQUE OF ROTARY SECTION
IS TRANSMITTED TO OUTPUT ROD
THROUGH A SPLINED SHAFT
EXTENSION FITTED INTO THE
SPLINE-BROACHED PISTON
IN THE LINEAR SECTION, WHILE
PISTON/ROD ASSEMBLY IS
EITHER RETRACTED, EXTENDED,
OR IN MOTION TRANSITION.

FULLY RETRACTED POSITION



FULLY EXTENDED POSITION

