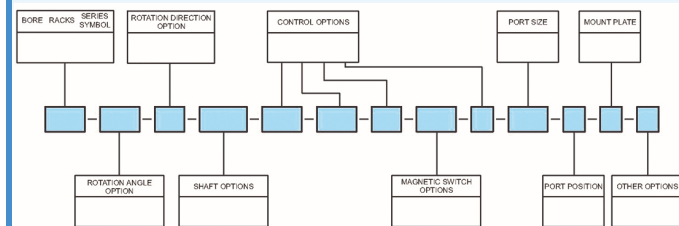


ROTOMATION PRODUCTS ARE...

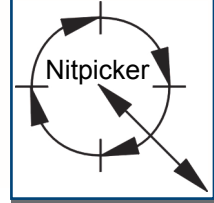
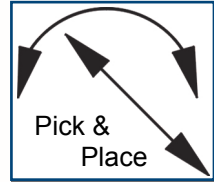
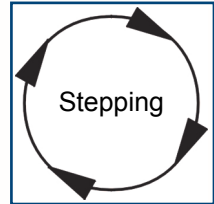
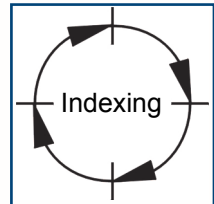
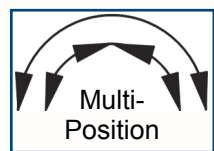
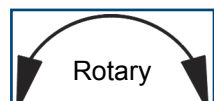
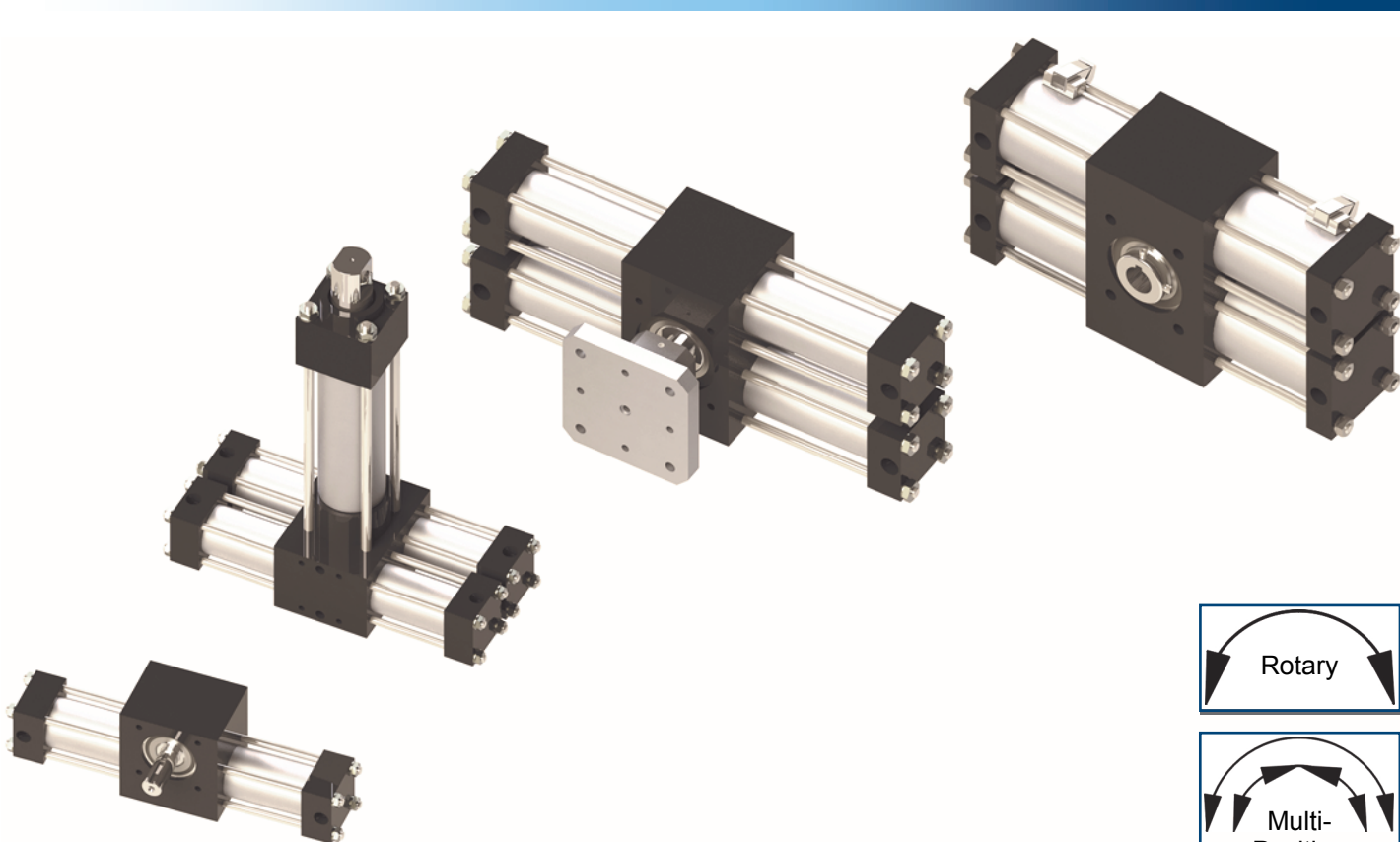
CONFIGURABLE



Rotomation lets you configure your actuator exactly to your needs. We have billions of standard configurations in our catalog that we can assemble and ship within days, regardless of the configuration you choose. Why settle for one-size-fits-all when you can have it your way! The image shown above is used to generate a comprehensive model number that depicts each aspect of the actuator you've chosen. For example, model number **A2-90-TC-S5KK-3C1-3A-3RL-V-1/8-2-J**.

UNIQUE

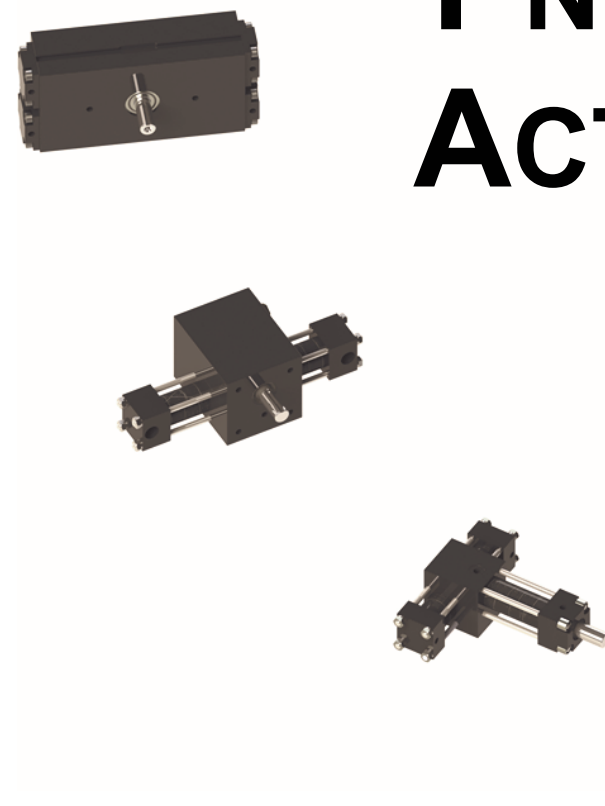
- Our indexing actuators are the only ones available on the market and can often replace stepping or servo drives at far lower cost and complexity.
- Our stepping actuators are of an integrated design with excellent shaft bearings rather than the add-on one-way clutch adapters offered by the competition.
- Our Pick and Place actuators offer combined independently controlled rotary and linear motions in a compact package.
- The unique compact design of our A032 rotary actuator provides more torque and bearing capacity than anything else of its size on the market.



ROTOMATION PNEUMATIC ACTUATORS

ROTOMATION PNEUMATIC ACTUATORS

PNEUMATIC ACTUATORS

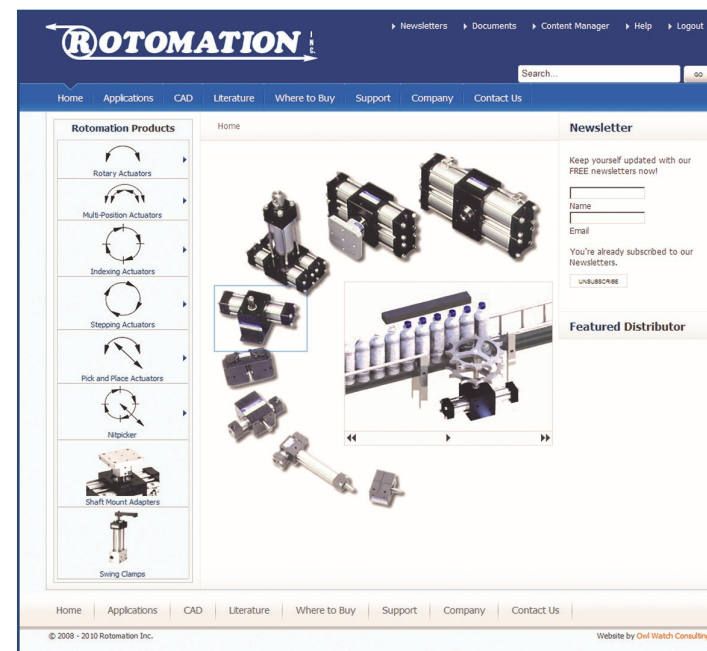


QUALITY PRODUCTS SINCE 1976



EXCELLENT SERVICE

Call Rotomation and you will talk directly with the people involved in designing, manufacturing, and shipping our products, not with an automated switchboard. Our team is committed to taking care of your order, backed with an average of over 19 years of experience with our company. All our parts are made in our own state-of-the-art CNC machine shop and stocked in our inventory. We assemble and test our actuators to order. This is a place where craftsmanship and attention to detail still counts. Try us!



PRODUCT CONFIGURATOR: 3DContentcentral.com

With the latest technology in solid modeling and parametric configuration, we now offer a growing number of self-served CAD files online that allows you to pick the options you need, configure your actuator and download 2D drawings and/or 3D models in many different file formats.

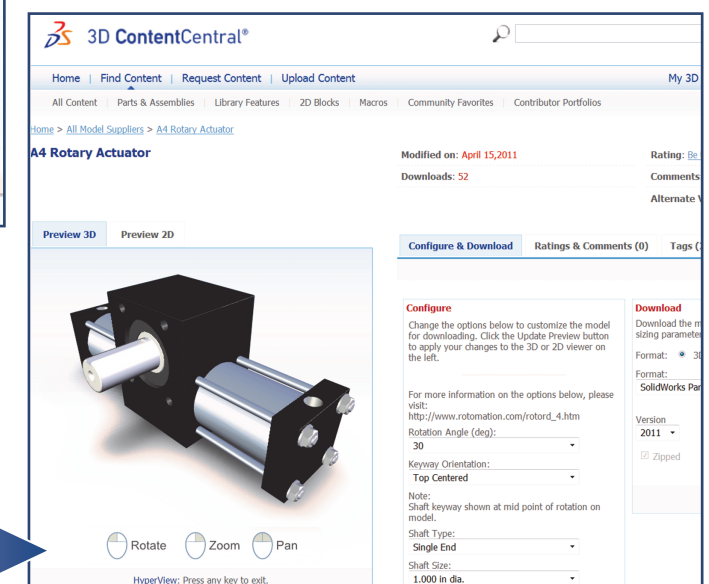


ROTOCAD

If you don't find the CAD file you are looking for on our website or you simply lack the time or familiarity required to configure our products, please feel free to contact us with your request and our engineers will provide you with the files you need in the format you specify within 24 hours of your request.

CUSTOMER-FOCUSED WEBSITE

Our website is designed around your needs. You can find exactly what you need with just a few clicks or navigate our intuitive product selection menu and easily access product technical information, CAD files, illustrations, instructions, and application examples that will help you successfully install and operate our products.

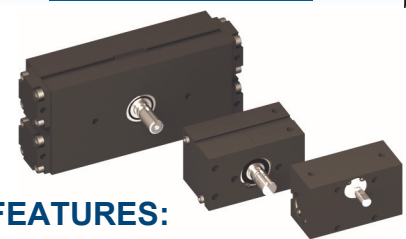


**11 Sunshine Boulevard
Ormond Beach, FL 32174
Phone: (386) 676-6377
Fax: (386) 676-6379**

ROTARY ACTUATORS

ROTATE SHAFT BACK AND FORTH

COMPACT BODY



KEY FEATURES:

- Zero backlash*
- Clean exterior
- High speed and torque
- Rotations up to 190 deg. on A032 and A752, up to 95 deg. on AL75

OPTIONS:

- Adjustable rotation
- Magnetic sensors
- Single or double ended shaft

APPLICATIONS:

- Handling small parts
- Semiconductor manufacturers
- Animatronics

UNIT-SPECIFIC OPTIONS:

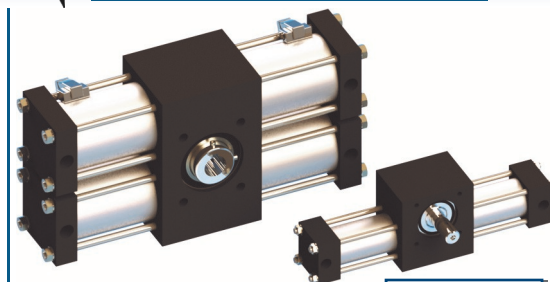
- A752:**
- Cushions and flow controls
 - Hollow shaft available
- AL75:**
- Washdown protection
- A032:**
- Multi-Position capable (3 positions)



Series	Shaft Dia. Standard / Opt. (in)	Torque (in-lb) at 80 psi	Bearing Ratings (lb)
A032	0.375 / 0.250	9	40
A032-3P	0.375 / 0.250	9	40
AL75	0.250 / None	11 (variable)	20
A752	0.375 / 0.250	35	40

*Not available on AL75 rotary actuators.

TIE ROD CONSTRUCTION



KEY FEATURES:

- Fully rebuildable
- Highly configurable
- Easily customizable
- Rotations up to 730 deg.
- Very rugged and precise

OPTIONS:

- Single, double or hollow shaft (HS)
- Adjustable rotation and bumpers
- Cushion and flow controls
- Mounting plates
- High pressure and heavy duty
- Washdown protection

APPLICATIONS:

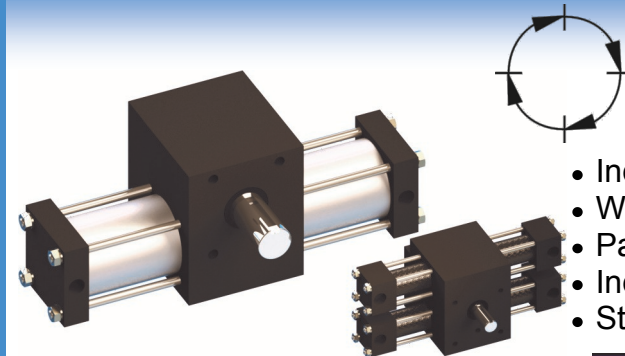
- Conveyor diverters
- Machine loading/unloading
- Material handling and packaging

Series	Shaft Dia. Standard / Opt. (in)	HS Shaft (in)	Torque (in-lb) at 80 psi	Bearing Ratings (lb)
A01	0.250 / 0.187	0.375	6	70
A1	0.375 / 0.250	0.375	12	300
A12	0.375 / 0.250	0.375	24	300
A2	0.500 / None	0.375	39	1000
A22	0.500 / None	0.375	78	1000
A3	0.750 / None	0.750	119	2000
A32	0.750 / None	0.750	238	2000
A4	1.000 / 1.125	0.750	277	2000
A42	1.000 / 1.125	0.750	553	2000



INDEXING ACTUATORS

ROTATE SHAFT ONE WAY IN FIXED STEPS TO HARD STOPS



APPLICATIONS:

- Indexing conveyors
- Walking beam
- Packaging (i.e. carton up-ender)
- Index tables
- Star wheels

The Rotomation indexing actuator is a unique pneumatic device that reliably provides shaft rotation in precise steps in one direction without cumulative error. It shares a number of components with a normal rack and pinion rotary actuator.

KEY FEATURES:

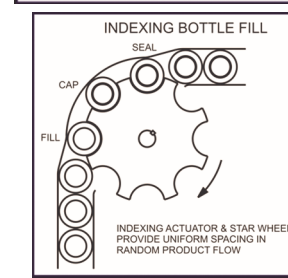
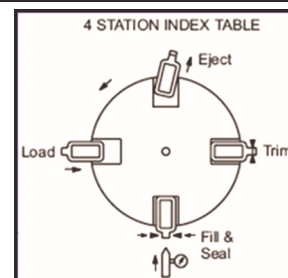
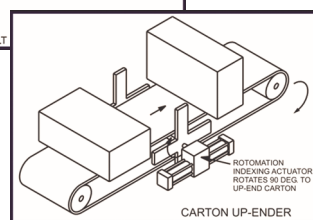
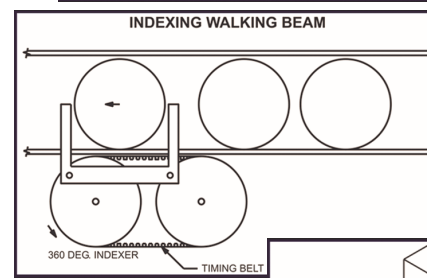
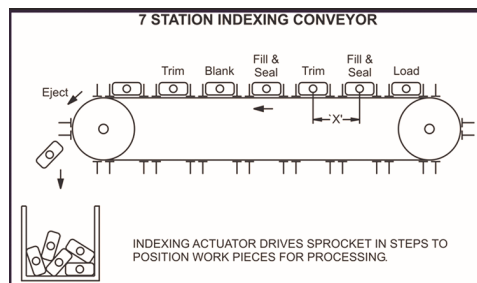
- Totally unique
- Low cost
- Simple replacement for servos
- Fast cycling with a 4-way valve
- Index steps from 12 to 360 deg.

OPTIONS:

- Cushions and flow controls
- Bumpers available for reset side
- Magnetic sensors
- Washdown protection
- High cycle life construction

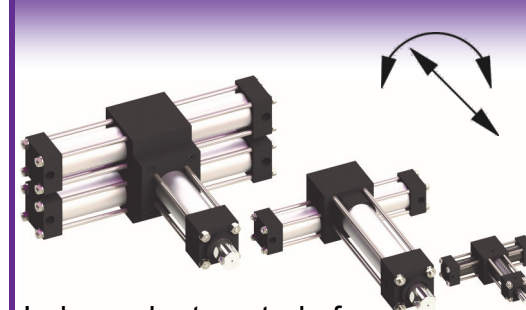
Series	Shaft Dia. (in)	Torque (in-lb) at 80 psi	Bearing Ratings (lb)	Max. Pressure (psi)	Max. Impact Energy (in-lb)
X1	0.375	12	300	250	2.1
X12	0.375	24	300	150	2.1
X2	0.500	39	500	150	4.0
X22	0.500	78	500	75*	4.0
X3	0.750	119	1000	120	8.9
X4	1.000	277	1100	120	17.4
X42	1.000	412	1100	60*	17.4

*Pressure at maximum torque allowable.



PICK & PLACE ACTUATORS

COMBINED ROTARY AND LINEAR MOTION



Independent control of rotary & linear motion.

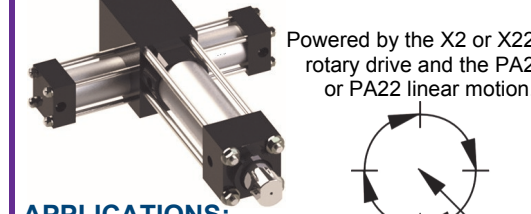
KEY FEATURES:

- Highly configurable
- Fully integrated
- PA01 rod is 0.375in diameter. All other are 1.000in
- Rotations up to 730 deg.
- Very rugged and precise

APPLICATIONS:

- Pick and place
- Reach in and turn
- Sample and dump
- Adhesive dispenser

NITPICKER ACTUATORS: COMBINED INDEXING AND LINEAR MOTION



Powered by the X2 or X22 rotary drive and the PA2 or PA22 linear motion.

APPLICATIONS:

- Pick and place multiple parts through multiple stations

Series	Extend Force (lb) at 80 psi	Torque Extended (in-lb) at 80 psi	Retract Force (lb) at 80 psi	Torque Retracted (in-lb) at 80 psi
PA01	18	4.6	11	6.2
PA2	118	24	56	34
PA22	118	63	56	73
PX2*	118	24	56	34
PX22*	118	63	56	73
PA3	118	104	56	114
PA32	118	223	56	233

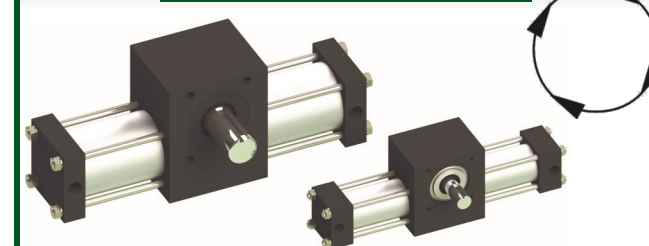
OTHER PRODUCTS AND ACCESSORIES

ROTATE ONE WAY IN INCREMENTAL STEPS

EXTENDS AND CLAMPS DOWN

CUSTOMIZED PRODUCTS

STEPPING ACTUATORS



KEY FEATURES:

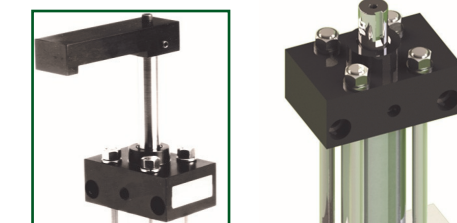
- No hard stops
- Rotation up to 730 deg.

APPLICATIONS:

- Feed material from spool in increments

Series	Shaft Dia. (in)	Torque (in-lb) at 80 psi	Bearing Ratings (lb)	Max. Pressure (psi)
S1	0.375	12	300	250
S2	0.500	39	500	150
S22	0.500	78	500	75
S3	0.750	119	1000	120
S4	1.000	277	1100	120

SWING CLAMPS



KEY FEATURE:

- Independent rotary and linear motion so that the arm can retract below the part

Series	Rod Dia. (in)	Max. Clamp Force (lb) at 80 psi	Max. Extend Force (lb) at 80 psi	Max. Working Pressure (psi)
CL5	0.750	528	742	500

SPECIALS



SPECIAL FEATURES:

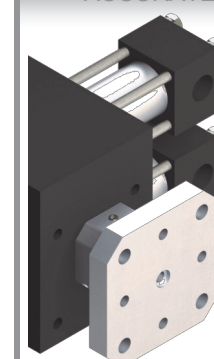
- Special shafts
- Special mounting hole patterns
- Special ports
- Special materials (Stainless, plastic)

CUSTOM PRODUCTS:

- Designed around your application
- Very flexible and short lead times

SHAFT MOUNTING ADAPTERS

ACCURATE ACTUATOR COUPLING



A simple, precise way to mount your load onto an actuator shaft. Choose between standard or custom hole patterns, or do-it-yourself by getting a blank. Custom male or female pilots machined on order. Available for all of our standard size output shafts and rods.

REPAIR/REBUILD SERVICES

Rotomation actuators are designed to be fully rebuildable. For a fraction of the original cost, we will perform a thorough assessment and give you a detailed report of the work required, along with an itemized quote prior to the repair. Don't throw away your tired actuator, we'll make it run as if it was new in no time!

TYPICAL ACTUATOR CONSTRUCTION & FEATURES*

